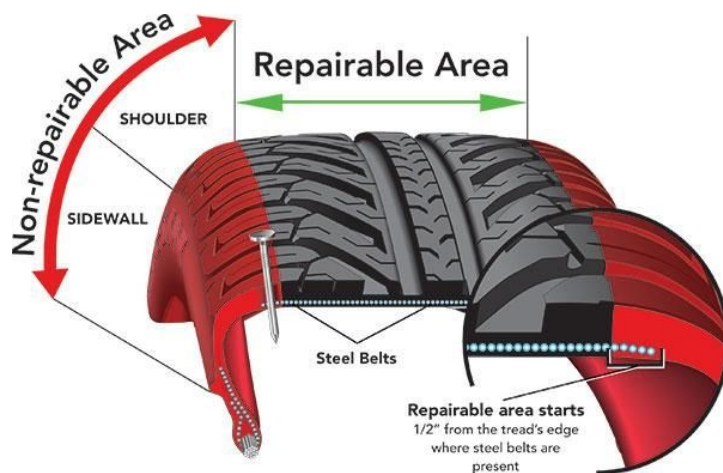


PUNCTURE REPAIRS



A puncture to any area of a tyre's tread will affect performance and safety, and therefore must be immediately attended to through either replacement of the tyre (spare or new tyre) or a patch. Any patch that is applied to a tyre must be applied to both the outer part of the tyre (tread) and the inner part of the tyre. The reason for this is that the rubber on each side is very different (inside is made of halobutyl rubber meant for holding air, while the outside is a harder durable rubber primarily designed for traction). A good tyre repair can only be made if the tyre is removed from the rim (wheel) and inspected carefully for any hidden damage. Only straight through holes, 3/16" or smaller diameter may be repaired, when no secondary damage has occurred.